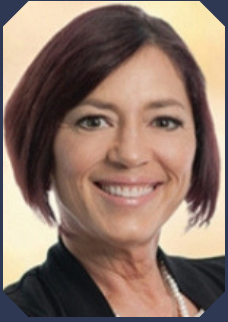


## Meet the Instructors



**Karen Wuertz**

DDS, ABCDSM, ABLs, FOM

Dr. Karen Wuertz is a Diplomate of the American Board of Craniofacial Dental Sleep Medicine, a Diplomate of the American Board of Laser Surgery and a Fellow in the American Academy of

Craniofacial Pain. Dr. Wuertz is passionate about treating and coordinating care for patients as it relates to oral restrictions, oral function, and airway management during Sleep.



**Jenifer Chiappetta Midili**

MA, CCC-SLP, COM

After earning her MA degree in Speech-Language Pathology at George Washington University, Jenifer practiced pediatric speech therapy at a private practice and INOVA Fairfax Hospital

with a focus on working with children with severe feeding and speech and language problems. She worked at Walter Reed Army Medical Center and the National Rehabilitation Hospital where she focused on Traumatic Brain Injuries in adults and children.



**Brooke Pettus**

RdH, Myofunctional Therapist

She completed her initial training through the Academy of Orofacial Myofunctional Therapy (AOMT) and MyoMentor, then took part in an online mentorship program. She attended symposium

training through the International Association of Orofacial Myology (IAOM), and plans to start their training program and certification track this year.



**Ayden Cox**

Licensed Massage & Bodywork Therapist

licensed massage therapist specializing in prenatal and postpartum bodywork along with infant, prenatal, postpartum and fertility craniosacral therapy.

# The Essentials of Orofacial Myology:

## Implications of Tethered Oral Tissues, Speech Development, Feeding & Breathing for All Ages

2 Day, Hands-On Course

14 CE Hours

Saturday & Sunday November 10 - 11, 2018

8:00 AM - 4:00 PM

4920 Niagara Rd, Ste 306 College Park, MD  
(near Washington, DC)

### Introduction

Ankyloglossia and Tethered Oral Tissues (TOTs) are best identified, diagnosed and treated by a multidisciplinary team of providers. This course will explore the important role of this team in facial development necessary for proper growth & development, feeding, and speech.

### Clinical Curriculum

- Demonstrate a wide range of didactic and clinical tools in the assessment & treatment of TOTS
- Learn how to identify barriers and contributing factors that interfere with speech development and Orofacial myology therapy in ankyloglossia, oral habits, & airway
- Recognize when to refer to other professionals
- Understand the importance of developing a multidisciplinary team

### Agenda

#### Day One

- 1 hour Introduction
- 3 hours Clinical case presentation (TOTS)  
*LUNCH*
- 3 hours Didactic & clinical material (Speech)

#### Day Two

- 2 hours TOTS laser surgery cases
- 2 hours Orofacial myofunctional therapy  
*LUNCH*
- 1 hour Orofacial myofunctional therapy (continued)
- 1.5 hours Multidisciplinary Approach putting all together case studies
- 0.5 hours Panel Discussion Q&As

### Tuition

SMDS Dentists: \$695  
Non-Member Dentists: \$795  
Residents: \$450  
Staff/IBCLC/OMT/SLP: \$400

### Registration

Call: (301) 345-4196  
Email: [valerie@smdsdentists.com](mailto:valerie@smdsdentists.com)